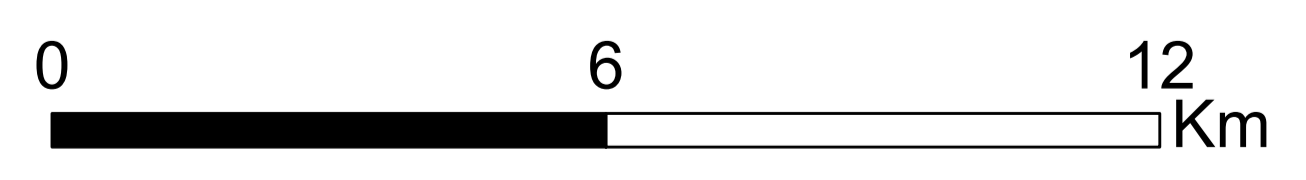
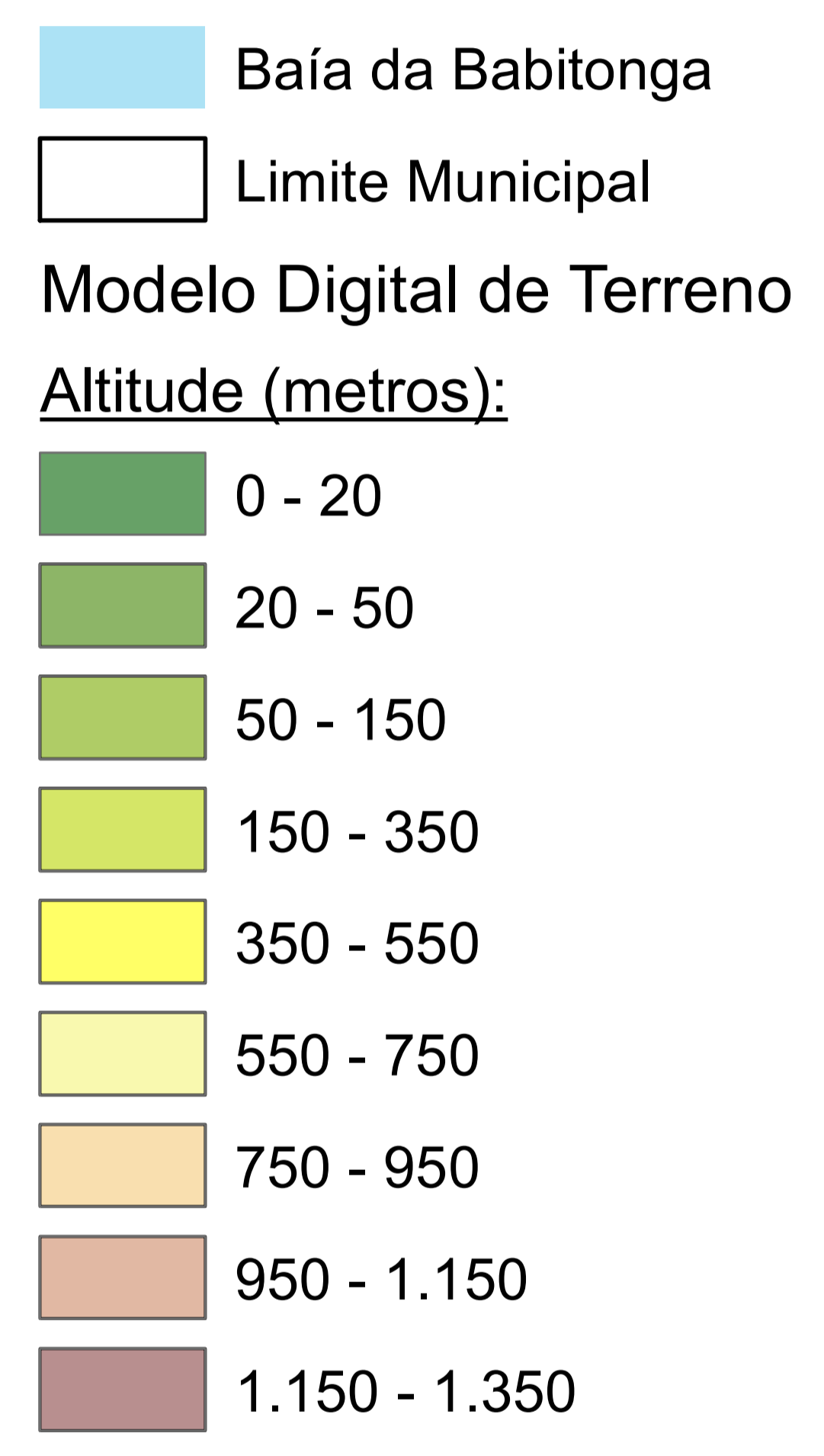
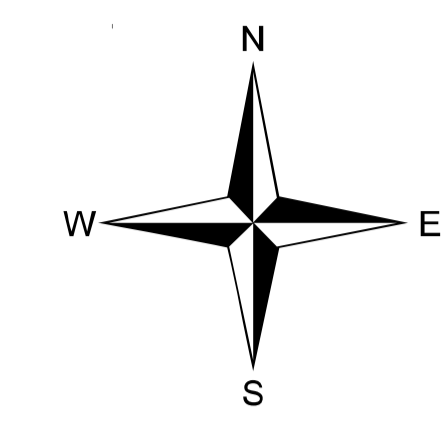
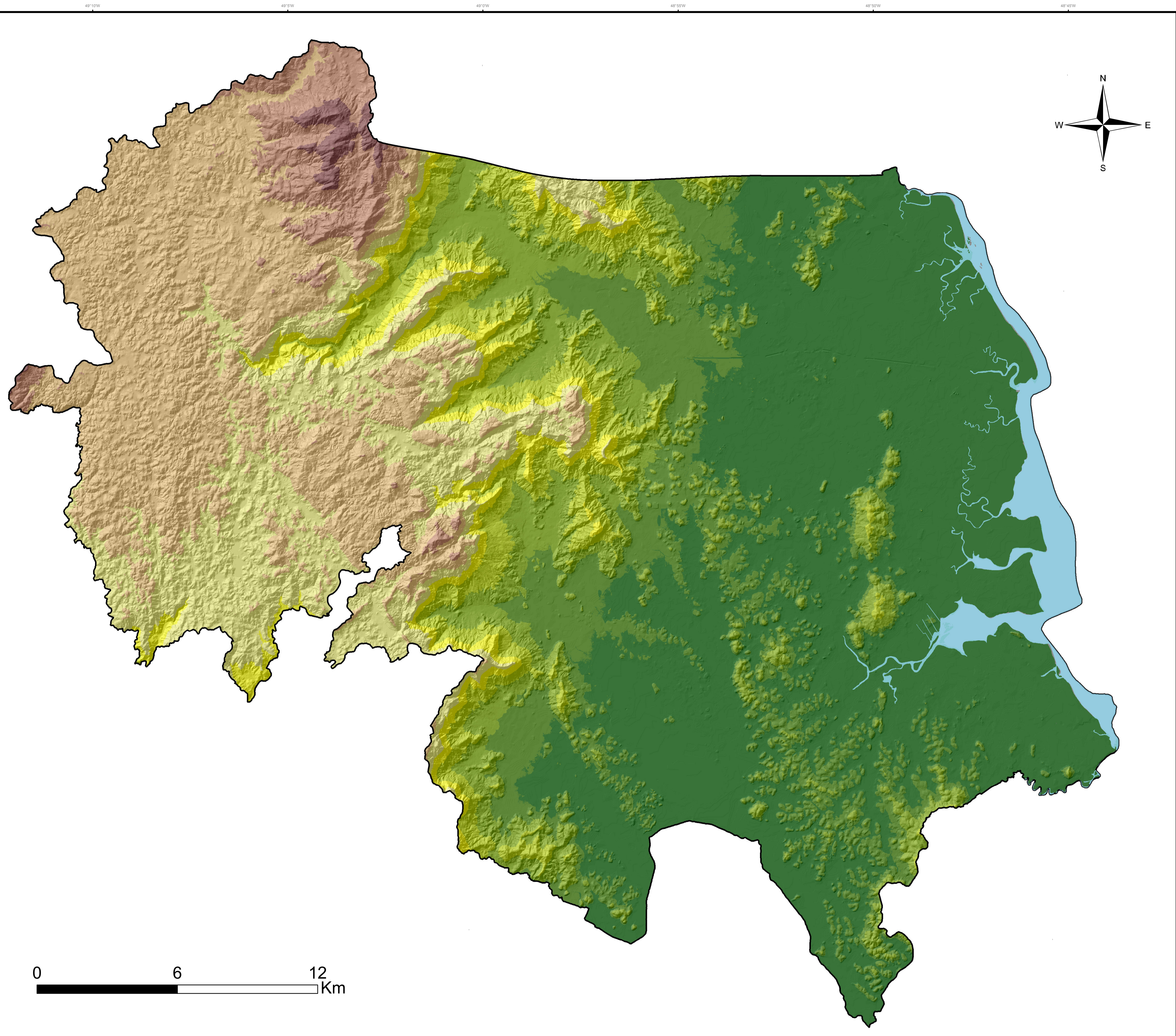


MUNICÍPIO DE JOINVILLE: MODELO DIGITAL DE TERRENO



Projeção: Transversa de Mercator (UTM).
Meridiano Central: W51° (fuso 22 sul).
Datum: Sirgas 2000.

Base Digital: PMJ / Aeroimagem, 2007-2010.
Levantamento Aerofotogramétrico
do Estado de Santa Catarina, 2012.
Data: 23/02/2016.

